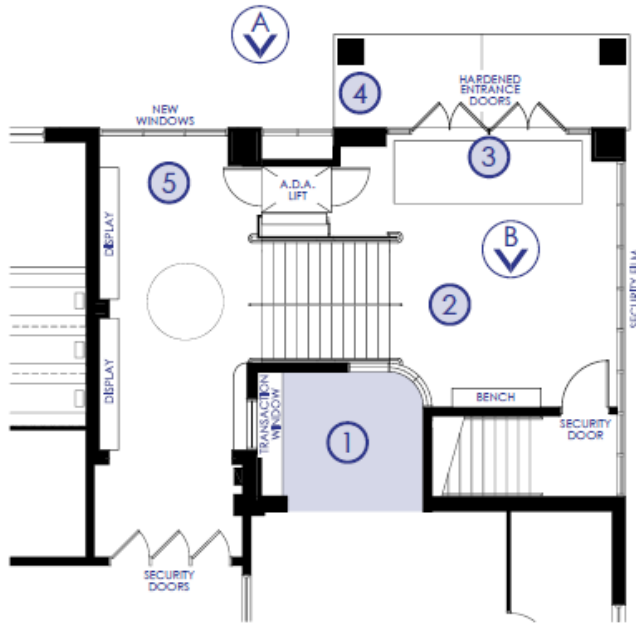


2023 Capital Project Vote: November 21, 2023!

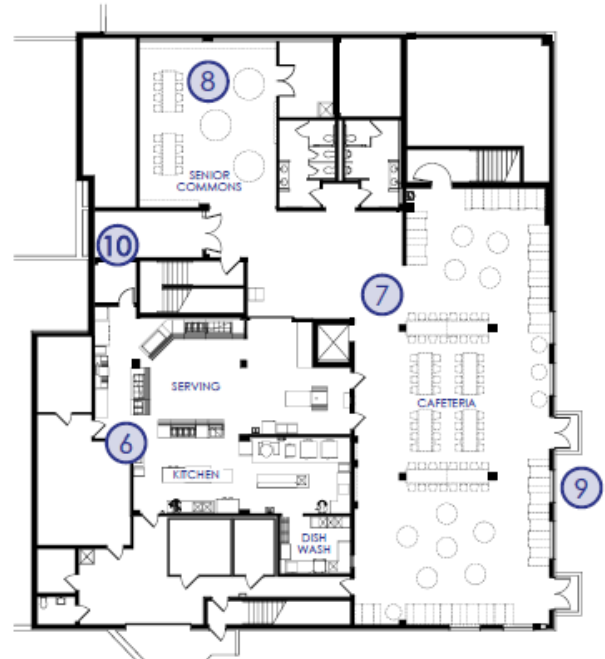
Dear Panama Community,

We are excited to announce that our next capital project is a tax neutral project that will focus on the following key building improvements in the areas of safety/security & food preparation/service for Panama Central School:

- Secure Main Entrance with Double Secure Entry Door & Credential Verification
- Renovated & Updated Cafeteria Area with New Layout & Seating
- Renovated & Updated Kitchen & Serving Area with New Layout & Equipment



PROPOSED MAIN ENTRY



PROPOSED KITCHEN & CAFETERIA

NEW SECURE MAIN ENTRANCE:

- 1 CONSTRUCTION OF A NEW SECURED RECEPTION OFFICE INCLUDING VISITOR CREDENTIAL VERIFICATION SYSTEM & MAIN ENTRY LINE OF SIGHT.
- 2 SECURED LOBBY RECONSTRUCTION. TO INCLUDE MAIN STAIR & A.D.A. LIFT RECONFIGURATION WITH LOCKED BASEMENT ACCESS DOOR.
- 3 NEW HARDENED ENTRANCE DOOR & WINDOW SYSTEMS WITH SECURITY FILM.
- 4 EXTERIOR CANOPY RECONSTRUCTION.
- 5 INFILL OF EXISTING EXTERIOR STAIR FOR 2ND FLOOR DISPLAYS & GATHERING SPACE.

KITCHEN & CAFETERIA RECONSTRUCTION:

- 6 RECONSTRUCTION OF THE EXISTING KITCHEN & SERVING AREAS. REPLACEMENT OF SELECT KITCHEN & SERVING EQUIPMENT.
- 7 RECONSTRUCTION OF THE EXISTING CAFETERIA TO CREATE DEFINED SEATING AREAS. WITH VARIOUS SEATING ARRANGMENTS & ALL NEW INTERIOR FINISHES.
- 8 NEW SENIOR COMMONS RECONSTRUCTION. TO INCLUDE VARIOUS SEATING OPTIONS & POWERED WORK SPACES.
- 9 SECURITY FILM ON EXISTING WINDOWS.
- 10 CREATION OF ADDITIONAL DISTRICT STORAGE.

By adding these security updates and the increased ability to provide an enhanced warm & welcoming food experience for our students, our students will be able to focus on their school day more fully. The facility will be a safer place for all with a dual secure entrance. The cafeteria and kitchen have served the district very well and is simply in need of important updates and new equipment. Voting will take place on November 21st from 12:00-8:00 in the North Gym Lobby. Should you need an absentee ballot, please contact Genevieve Jordan at (716) 782-2455 or districtclerk@pancent.org.

Thanks for all you do to support our students!

Sincerely,

Aaron W. Wolfe